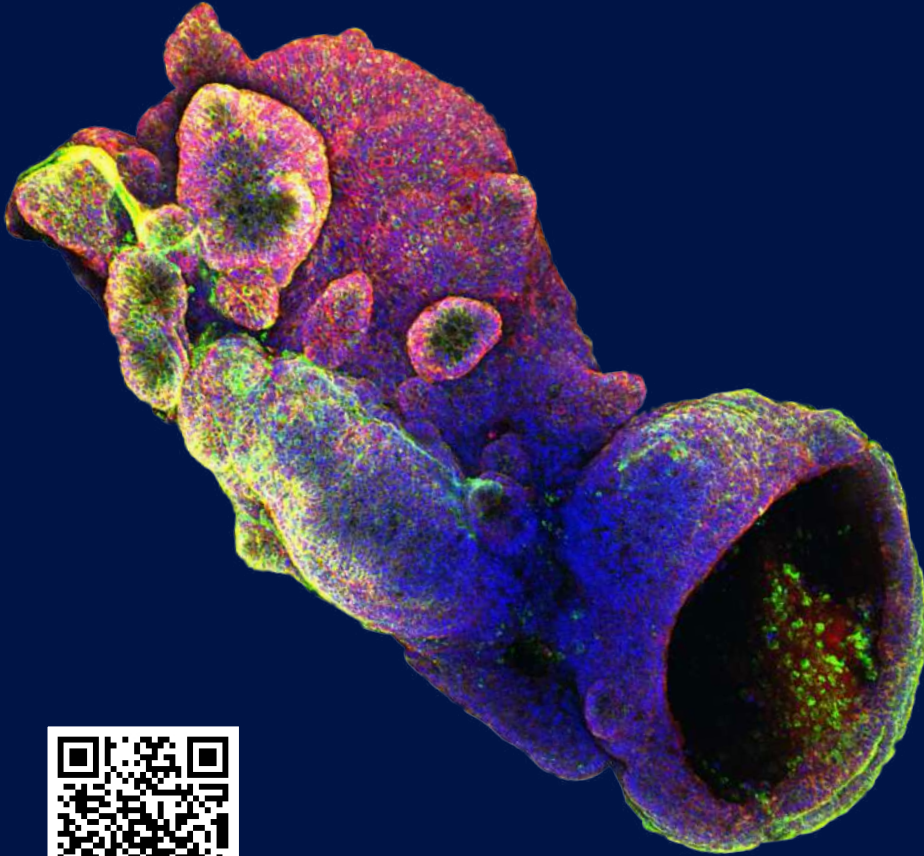


Organoid culture는 이제

R&D SYSTEMS™
a biotechne brand

BME 와 함께!



for better

- iPSC
- 2D, 3D
- Organoid

Lot-to-Lot consistency



SALE

1+1

*신규고객에 한함

Cat#	Name	설명
3533-005-02	Cultrex RGF BME, Tyep 2, Pathclear	오가노이드 culture용으로 가장 많이 사용
3433-010-R1	Cultrex RGF BME, Tyep 1, Pathclear	Entactin 함유량 높아 복잡한 오가노이드에 적합
3632-005-02	Cultrex RGF BME, Tyep 3, Pathclear	in vivo injection용 제품
3432-005-01	Cultrex BME, Pathclear	일반적인 growth factor 포함 제품. Multi culture에 적합
BME001-05	Cultrex UltiMatrix RGF BME, Pathclear	Entactin 함유량 높으면서 stem cell 및 오가노이드 culture에 적합

*기존에 사용하시던 제품과 호환 가능한 제품 찾으신다면 학술팀으로 연락 주세요!



02-881-5432



techserv@woongbee.com



웅비메디텍
WOONGBEE.COM

Growth Factors

Product	Cat#	GMP Cat#
ActivinA	338-AC	338-GMP
BMP-2	355-BM	355-GMP
BMP-4	314-BP	314E-GMP*
BMP-7	354-BP	
EGF	236-EG	236-GMP*
FGF-basic	233-FB	3718-GMP*
FGF-2	3718-FB	3718-GMP*
FGF-4	7460-F4	
FGF-7	251-KG	251-GMP
FGF-9	273-F9	
FGF-10	345-FG	
FGF-19	969-FG	
HGF	294-HG	
Noggin	6057-NG	6057-GMP
OncostatinM	8475-OM	
R-Spondin1	4645-RS	
R-Spondin3	3500-RS	
Wnt-10b	2110-WN	
Wnt-3a	5036-WN	5036-GMP

Small Molecules

Product	Cat#	GMP Cat#
A 83-01	2939	
CHIR 99021	4423	TB4423-GMP
DAPT	2634	
Forskolin	1099	
Galunisertib	6956	
Gastrin	3006	
HEPES	3173	
IWP 2	3533	
IWP 4	5214	
LDN 193189 dihydrochloride	6053	TB6053-GMP
N-Acetylcysteine	5619	
Nicotinamide	4106	
SB 202190	1264	
PD 0325901	4192	
Prostaglandin E2	2296	
Retinoic Acid	0695	
SB 431542	1614	TB1614-GMP
Testosterone	2822	
Y-27623 dihydrochloride	1254	TB1254-GMP

* Animal-free GMP protein

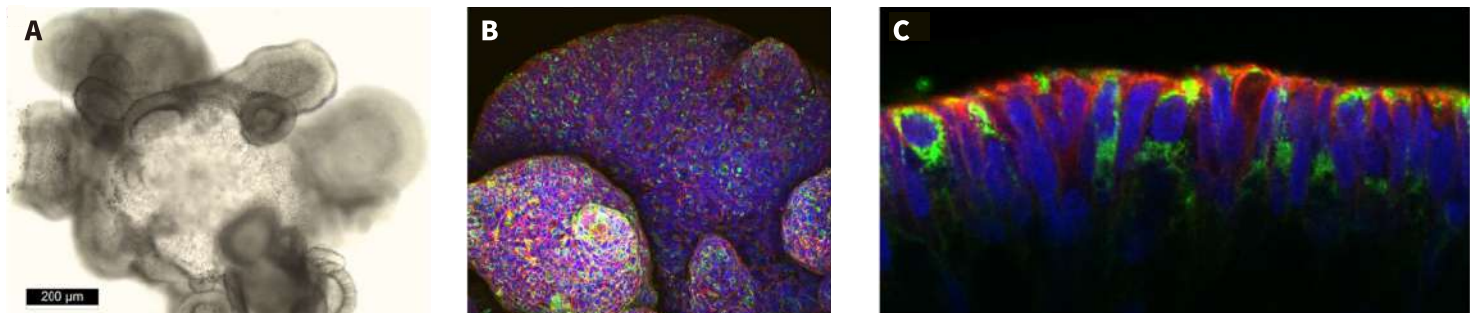


Fig.1 Human Descending Colon Organoids Grown in Cultrex UltiMatrix RGF BME.

Adult stem cells isolated from human descending colon were embedded in Cultrex UltiMatrix RGF BME (R&D Systems, Catalog # BME001) and cultured in growth medium for 30 days prior to imaging. A) Brightfield image of descending colon organoid showing tissue invagination and epithelial layer formation. B, C) Descending colon organoids were stained with Chromogranin A (green; R&D Systems, Catalog # MAB90981), to visualize intestinal enteroendocrine cells, and counterstained for E-Cadherin (red; R&D Systems, Catalog # AF748) and DAPI (blue; R&D Systems, Catalog # 5748).

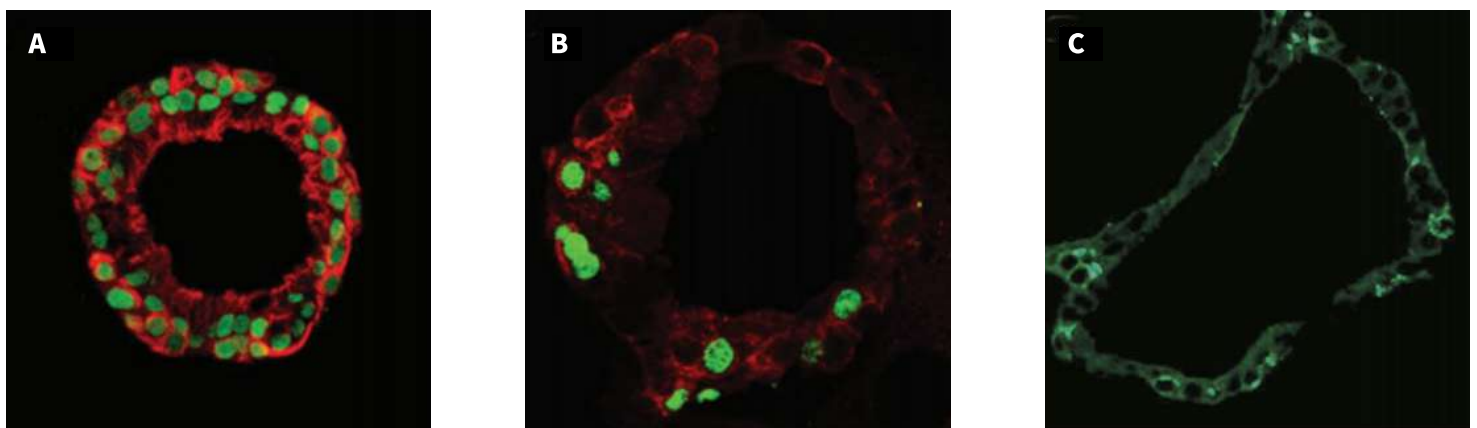


Fig2. Characterization of Human Lung Organoids. Representative images of human lung organoids for tissue-specific cell types. Sox2 (green; R&D Systems, Catalog # AF2018) and Acetylated Tubulin (red; Novus Biologicals, Catalog # NB600-567). p63/TP73L (green; R&D Systems, Catalog # AF1916) and Cytokeratin 10 (red; Novus Biologicals, Catalog # NBP2-61736). Podoplanin (green; R&D Systems, Catalog # AF3670) as a marker of type 1 alveolar cells.